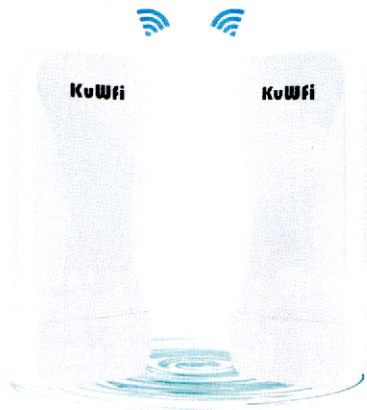


KuWFi 2.4GHz/5.8GHz Outdoor Wireless Bridge

Quick Setup Manual



1.Product Appearance and Interface	1
2. Main function	2
3. One-click Fast Pairing	3
4. WeBUI Manage Pages	5
5. Application	10

1.Product Appearance

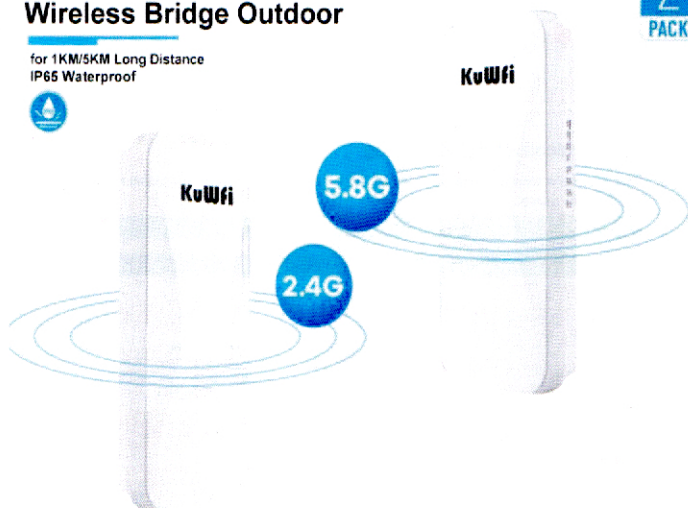
KuWfi

Wireless Bridge Outdoor

for 1KM/5KM Long Distance
IP65 Waterproof



2
PACK



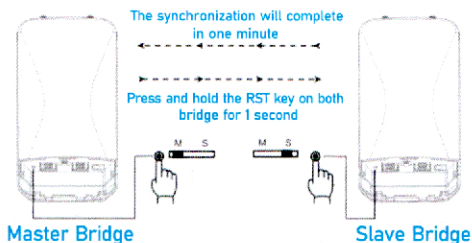
2. Main function

- ⌚ Long-distance 2.4/5.8G wireless transmission equipment
- ⌚ Support point-to-point, point-to-multipoint mode
- ⌚ Built in 12dBi antenna,transmission distance can be up to 1-5 km(Barrier-Free)
- ⌚ High Speed,The 2.4GHz&5.8GHz Wifi network maximum rate of 300Mbps&900Mbps,with RJ45 WAN/LAN Gigabit Port.
- ⌚ Supports 2448V PoE power supply and DC 12V power supply.
- ⌚ Fast pairing,through the buttons on the bridge, the two Bridges can be pairing with one click, eliminating the tedious pairing process.
- ⌚ Supports AP / Reepater functions,can access more wireless clients.
- ⌚ Dustproof and waterproof shell, all-weather sunscreen, waterproof, dustproof seal design can be used in various outdoor Working in the environment.

3. One-click Fast Pairing

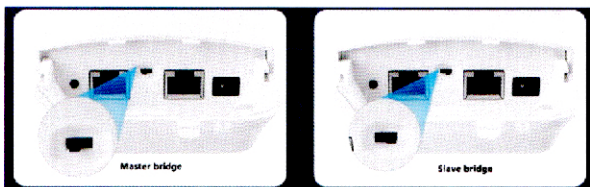
🕒 Point to Point:

The Master / Slave Bridge can set bridge 1 as the master router and bridge 2 as the slave router respectively. First, press and hold the RST key on the Master Router for 1~3 seconds and release it. Within one minute, press and hold the RST key on the Slave Router for 1~3 seconds and release it. Wait 1 minutes and the two Bridges will be successfully paired.



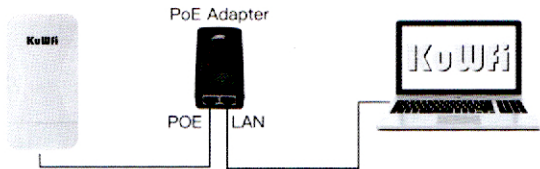
🕒 Point to Multipoint:

First, press and hold the RST key on the Master Router for 1~3 seconds and release it. Within one minute, press and hold the RST key on the another Slave Router for 1~3 seconds and release it. Wait 2 minutes, the new Slave Router is successfully added to the network.



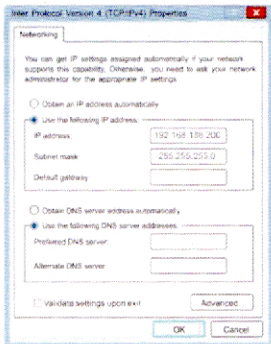
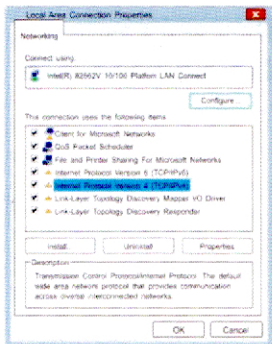
4. WeUI Manage Pages

Connect the CPE by LAN Port (Use RJ45 Cable)



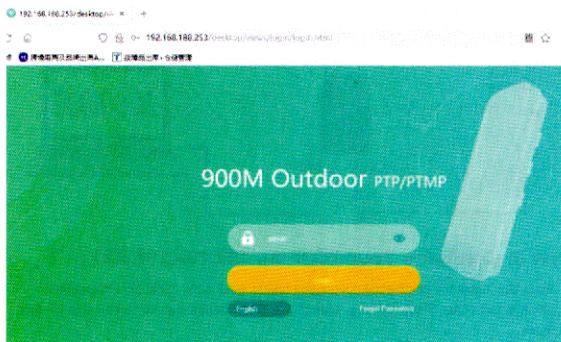
How to Configure Your PC IP As 192.168.188.XXX:

- Find the network connection you are using and right click on Properties.
- Double click the IPV4 setting, select the IP address below, enter the IP and confirm.
- Configure your PC IP as 192.168.188.XXX (XXX is a figure 11-200), and the subnet mask is set to 255.255.255.0, note that the set PC IP cannot be the same as the IP of the CPE.(CPE IP: 192.168.188.253)



(1) Login WebUI

Open the computer browsers,after entering its address 192.168.188.253,and then enter Password(**admin**).



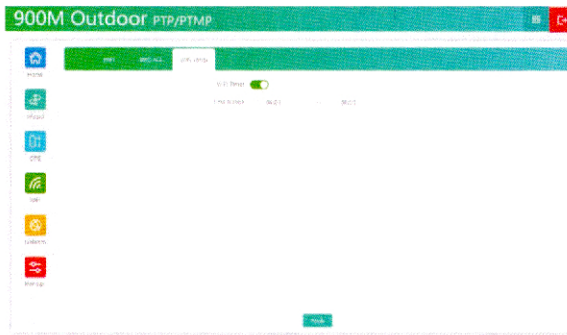
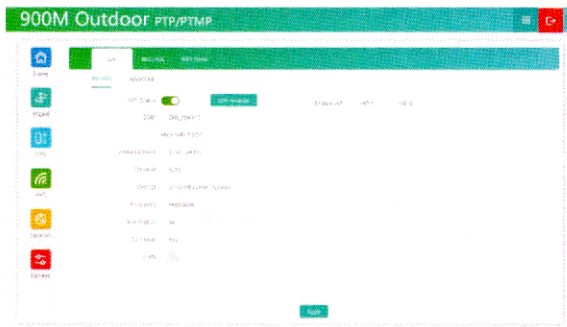
(2) Check CPE Bridge

You can click on 'CPE', and then you can see the current CPE device connection information.



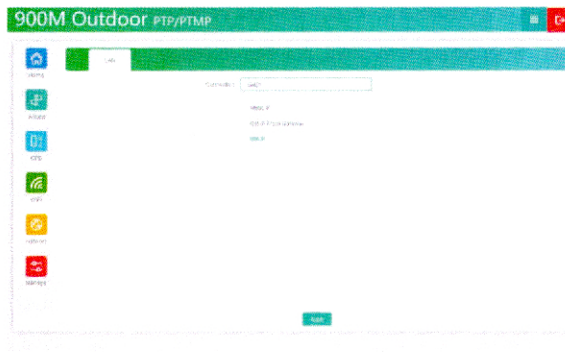
(3) Wireless Bridge Setting

You can customize the Wireless Bridge SSID and Password. In addition, the device wifi signal can be turned on timing management. (It can only be modified in the Master Bridge)



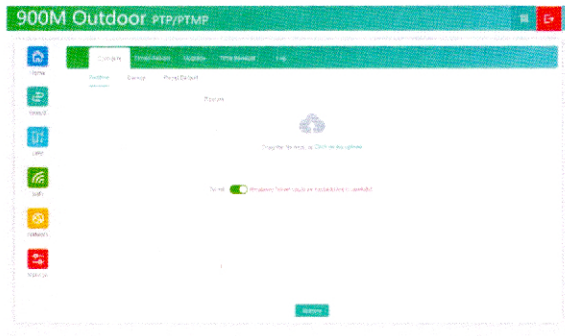
(4) LAN Port Network Setting

Here you can select 'Static IP' or 'Get IP From Gateway' or 'DHCP'.



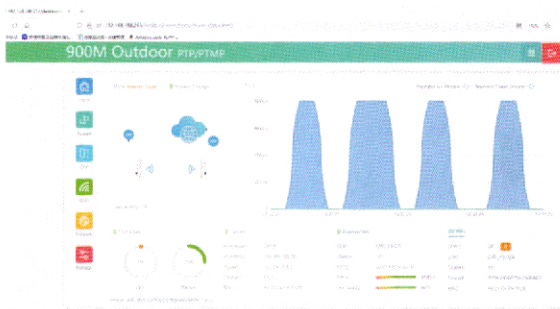
(5) Firmware Configure

The firmware of the Wireless Bridge can be restored, backed up, reset, and reset.



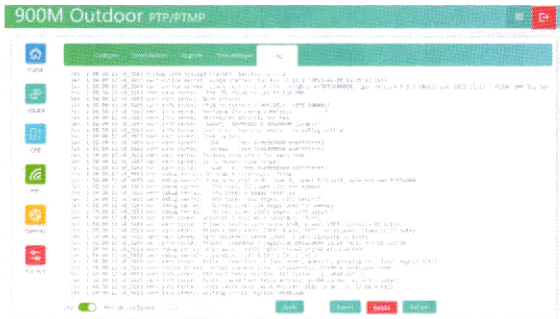
(6) Slave Bridge Info

After pairing is complete, log in to the WEB UI management page of the Slave Bridge, and you can see the current signal strength and link quality in 'Home'.



(7) Wireless Bridge Work Log

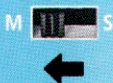
The firmware provides the work log of the wireless bridge to adapt to the needs of different users.



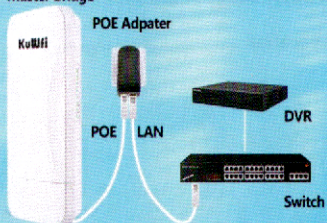
5. Application

Switch Master/ slave Bridge Mode

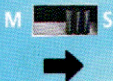
Master Bridge



Master Bridge



Slave Bridge



Slave Bridge



